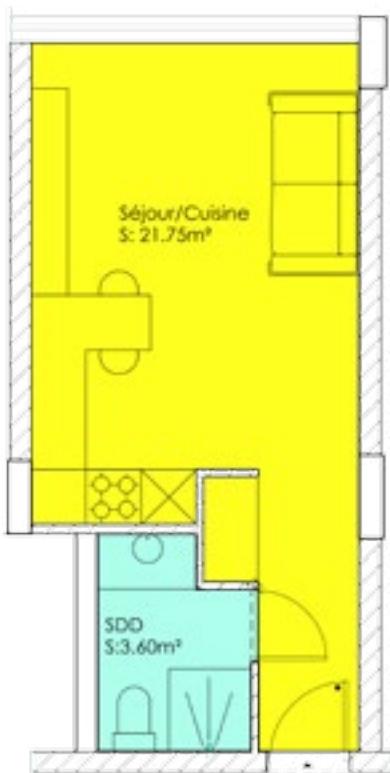




STUDIOS “ARCHIMÈDE”

INVEST IN THE EUROPEAN DISTRICT!

An annual yield of 8,5% for a very secured investment... What more can you expect?



Example - Studio #7
25,9 m²

9 Units
Space between 23m² and 28m²
Prices between 129.000€ and 144.000€

Estimated Yield

Acquisition price	140.000€
Registration & related expenses	21.000€
Investment	161.000€
Monthly rent	650€

Gross Rental Yield	5,0 %
Average Capital Gain	3,5 %

Gross Annual Yield 8,5 %

VISITS & INFORMATION

Séverine Grandjean

+32 (0)495 30 67 96 • severine.grandjean@softimat.com • www.softimat.com



APARTMENTS “ARCHIMÈDE”

DON'T MISS THIS UNIQUE OPPORTUNITY!

No more unpersonal hotel nights, now you can sleep at home! And it is profitable!



Example - Apartment #10
40,71 m²

3 Units
Space between 39m² and 41m²
Prices between 210.000€ and 220.000€

Estimated Yield

Acquisition price	215.000€
Registration and related expenses	39.925€
Investment	245.925€
Monthly rent	975€
Gross Rental Yield	5,0 %
Average Capital Gain	3,5 %

Gross Annual Yield 8,5 %

VISITS & INFORMATION

Séverine Grandjean

+32 (0)495 30 67 96 • severine.grandjean@softimat.com • www.softimat.com